

MALDIVES LAND SURVEY AUTHORITY

MINISTRY OF HOUSING AND INFRASTRUCTURE

Office (PABX): +(960) 3004300, Fax: +(960) 3004254

Email: survey@housing.gov.mv

Web: www.surveyofmaldives.gov.mv,

Ameenee Magu, Maafannu, Male', 20392, Maldives.



CONTROLPOINT DETAILS	Station Number	PSM 5610
Coordinate Information		
Geodetic	Grid	
WGS 84	UTM Zone 43	
Lat: 2°41'22.36590"N	E:	297486.740m
Long: 72°51'29.96866"E	N:	261890.330m
Ellp Height:	Orth Height: +1.526m	
Island Name: Dh.Maafushi	Date: 14 July 2019	

Monument description & method of survey:

-Established to Type A monument standard. -Stainless steel plate fixed to concrete by Four bolts - Horizontal coordinates fixed by GNSS Static survey.

-Above 200mm

-Elevation reduced relative to Local MSL by reference to tide prediction data MET (K.Hulhule')

General site condition & access:

- Easily accessible area with wide angle of sky visibility
- Located in the harbour area, next to fuel pump station

Owner: RIU Atoll Pvt Ltd

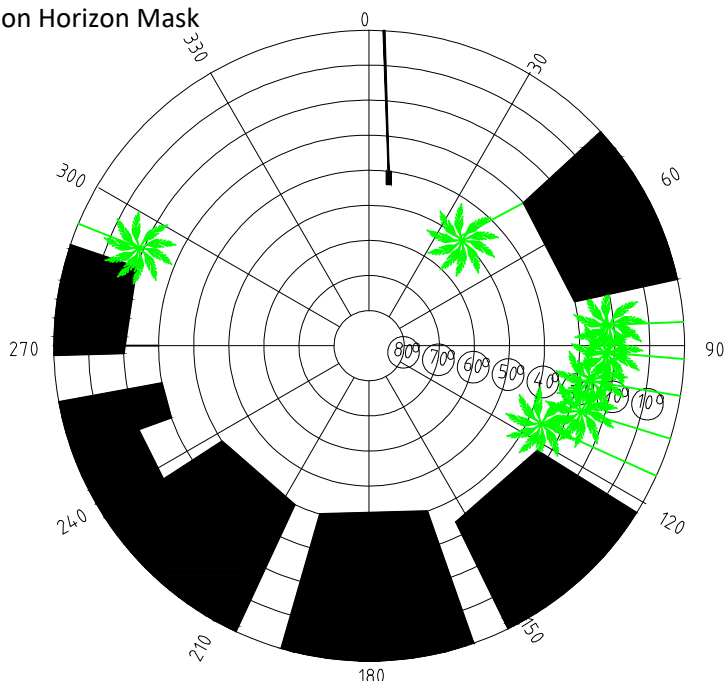


SITE INFORMATION

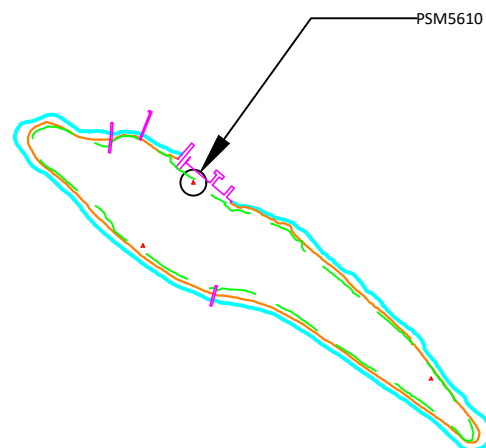
Station Number

P	S	M	5	6	1	0
---	---	---	---	---	---	---

Station Horizon Mask

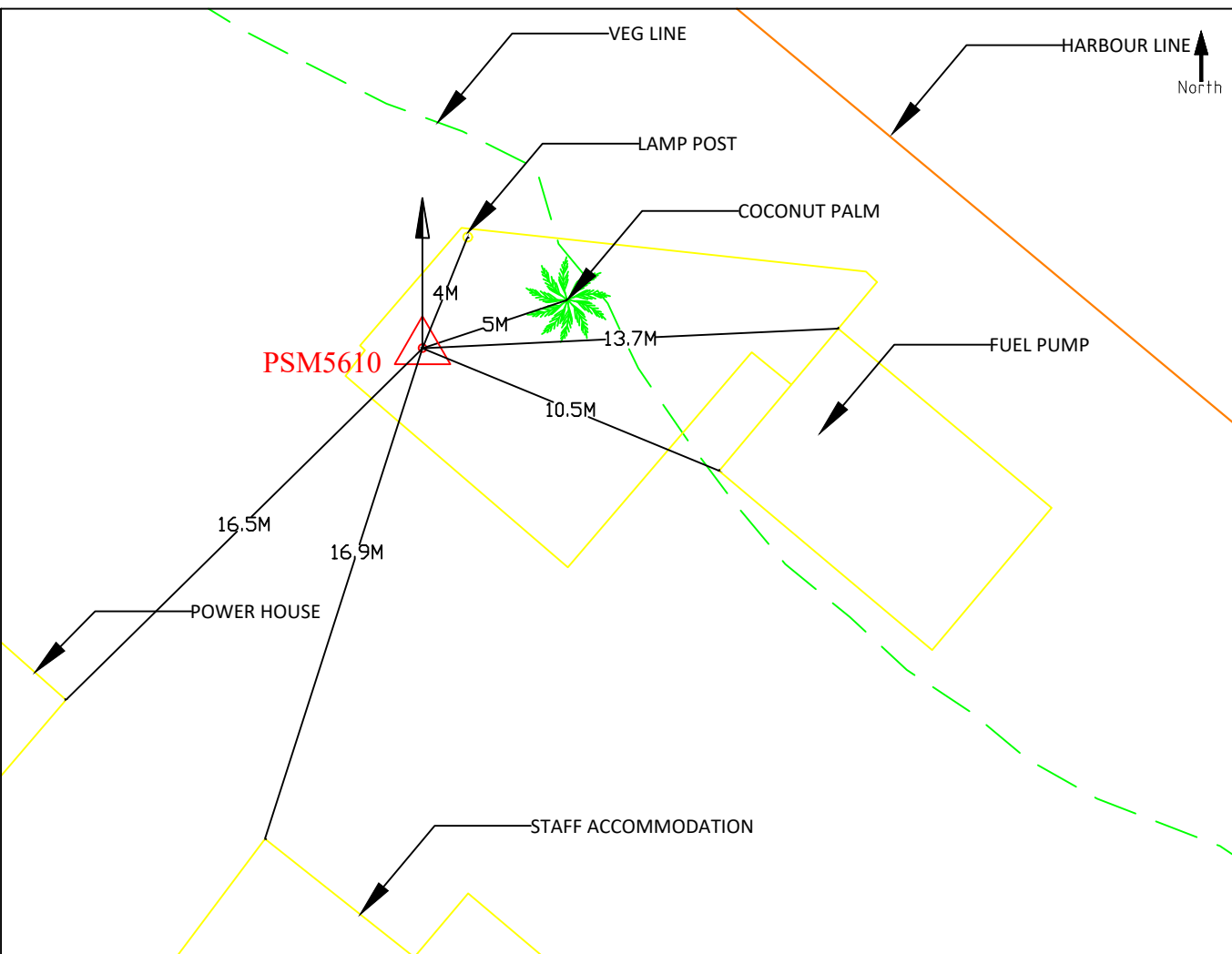


Locality



Height above Marker that horizon was mapped from 1.5 m

Magnetic Declination _____
 Declination applied to this figure?
 Yes No



Sketched by: MUBEEN

Scale: Not to Scale

Date: 14 JULY 2019

MALDIVES LAND SURVEY AUTHORITY

MINISTRY OF HOUSING AND INFRASTRUCTURE

Office (PABX): +(960) 3004300, Fax: +(960) 3004254

Email: survey@housing.gov.mv

Web: www.surveyofmaldives.gov.mv,

Ameenee Magu, Maafannu, Male', 20392, Maldives.



CONTROLPOINT DETAILS	Station Number	PSM 5611
Coordinate Information		
Geodetic	Grid	
WGS 84	UTM Zone 43	
Lat: 2°41'18.80217"N	E:	261802.791m
Long: 72°51'27.14167"E	N:	297377.397m
Ellp Height:	Orth Height:	+1.162
Island Name: Dh.Maafushi	Date:	14 July 2019

Monument description & method of survey:

-Established to Type A monument standard. -Stainless steel plate fixed to concrete by Four bolts - Horizontal coordinates fixed by GNSS Static survey.

-Below 200mm

-Reduce level of PSM 5610 was transferred to PSM 5611 by using the level difference obtained from the GNSS static survey.

General site condition & access:

- Easily accessible area with wide angle of sky visibility
- Located in between main pool and guest room.Oposite to the volley court

Owner: RIU Atoll Pvt Ltd

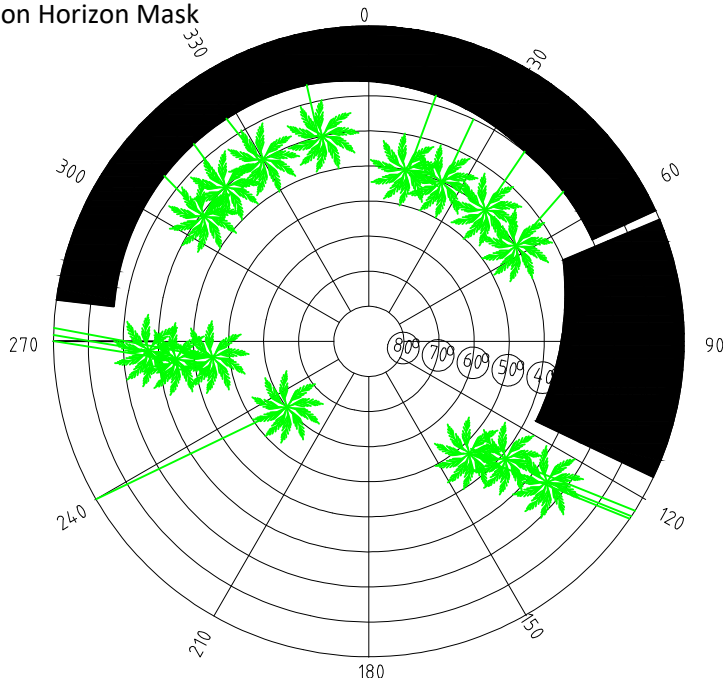


SITE INFORMATION

Station Number

P	S	M	5	6	1	1
---	---	---	---	---	---	---

Station Horizon Mask

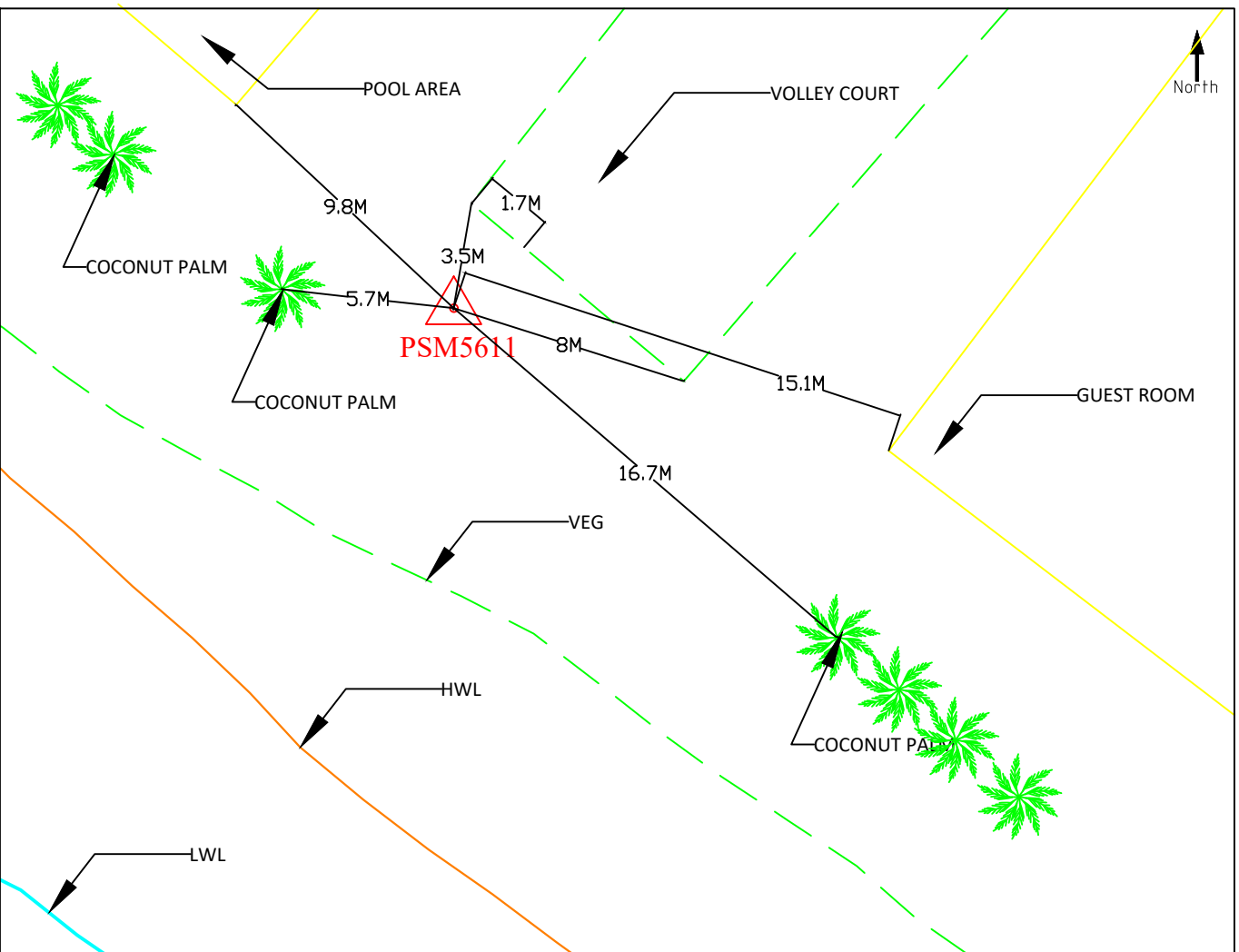
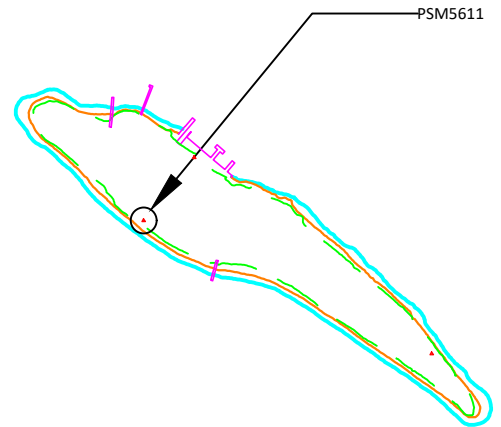


Height above Marker that horizon was mapped from 1.5 m

Magnetic Declination Declination applied to this figure?
 Yes No



Locality



Sketched by: MUBEEN

Scale: Not to Scale

Date: 14 JULY 2019

MALDIVES LAND SURVEY AUTHORITY

MINISTRY OF HOUSING AND INFRASTRUCTURE

Office (PABX): +(960) 3004300, Fax: +(960) 3004254

Email: survey@housing.gov.mv

Web: www.surveyofmaldives.gov.mv,

Ameenee Magu, Maafannu, Male', 20392, Maldives.



CONTROLPOINT DETAILS	Station Number	PSM 5612
Coordinate Information		
Geodetic	Grid	
WGS 84	UTM Zone 43	
Lat: 2°41'11.32927"N	E:	262301.945m
Long: 72°51'43.30982"E	N:	297146.918m
Ellp Height:	Orth Height: +1.484m	
Island Name: Dh.Maafushi	Date: 14 July 2019	

Monument description & method of survey:

-Established to Type A monument standard. -Stainless steel plate fixed to concrete by Four bolts - Horizontal coordinates fixed by GNSS Static survey.

-Below 200mm

-Reduce level of PSM 5610 was transferred to PSM 5612 by using the level difference obtained from the GNSS static survey.

General site condition & access:

- Easily accessible area with wide angle of sky visibility
- Located next to the main walk way, to ward north west side of the island. In front of Guest block 23

Owner: RIU Atoll Pvt Ltd

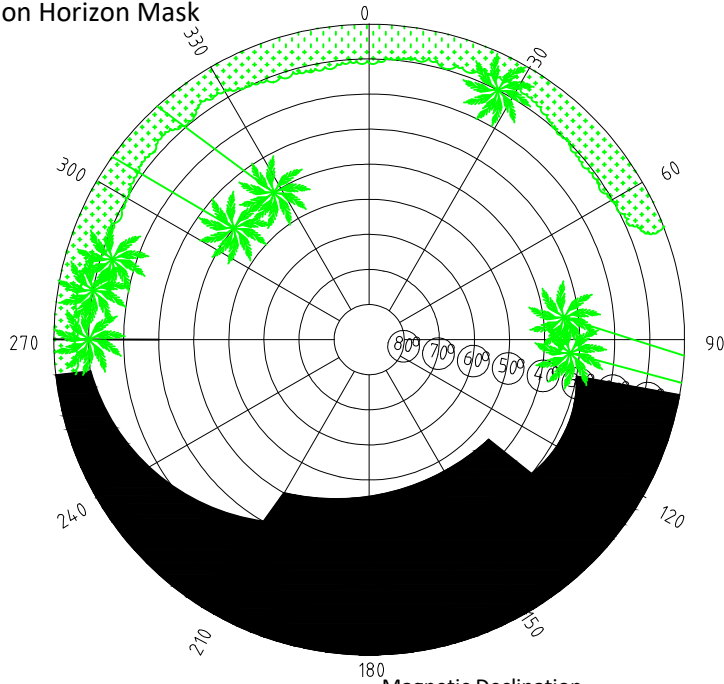


SITE INFORMATION

Station Number

P	S	M	5	6	1	2
---	---	---	---	---	---	---

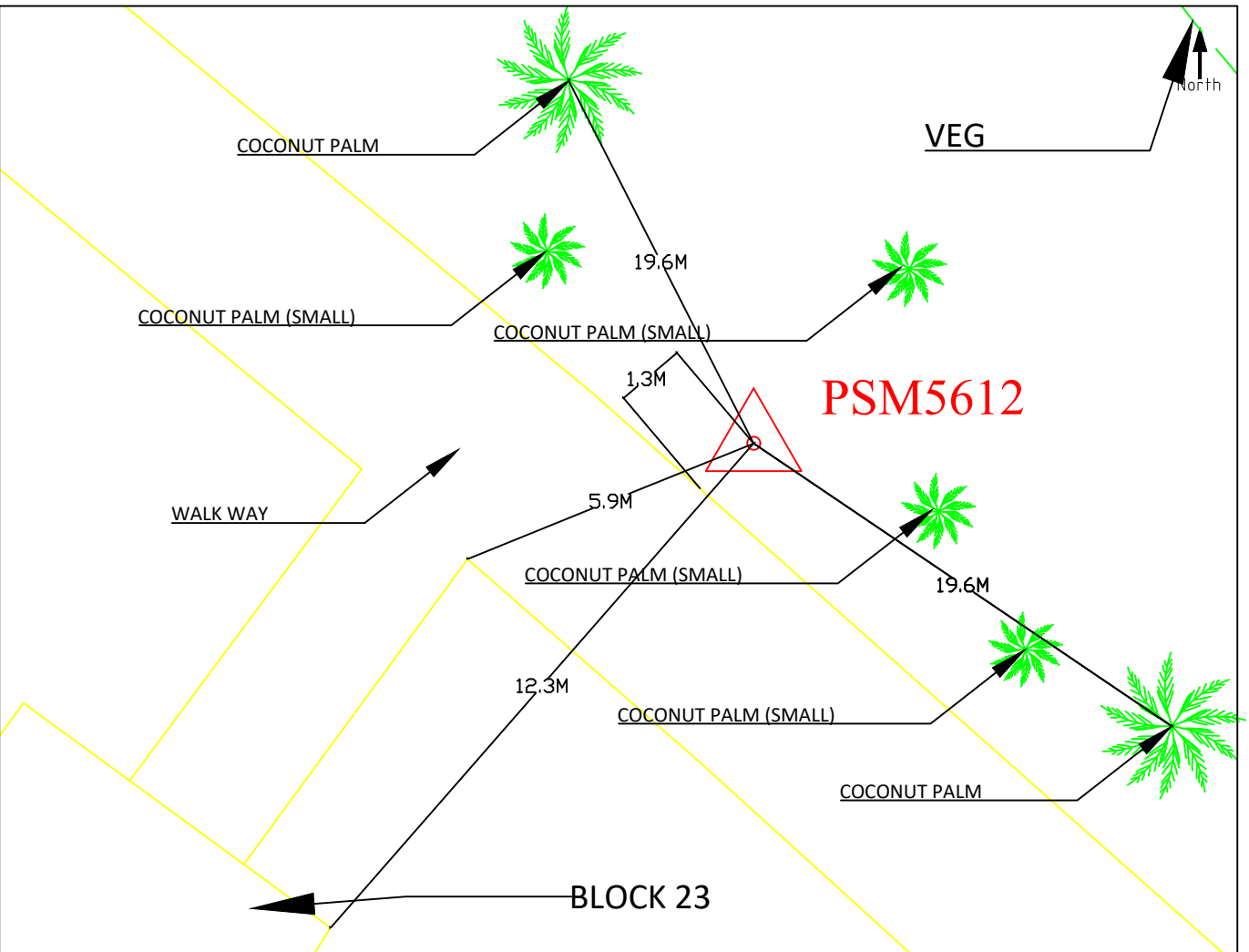
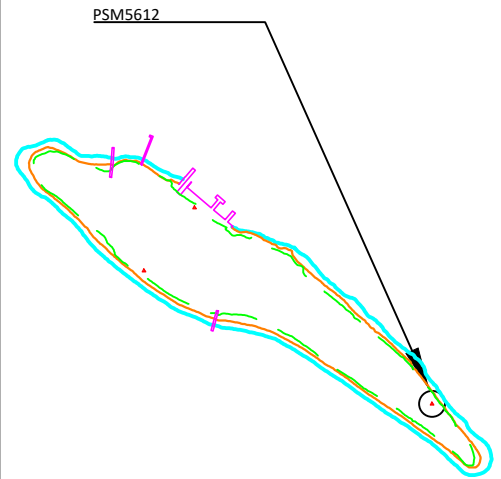
Station Horizon Mask



Height above Marker that horizon was mapped from 1.5 m

Magnetic Declination _____
 Declination applied to this figure?
 Yes No

Locality



Sketched by: MUBEEN

Scale: Not to Scale

Date: 14 JULY 2019